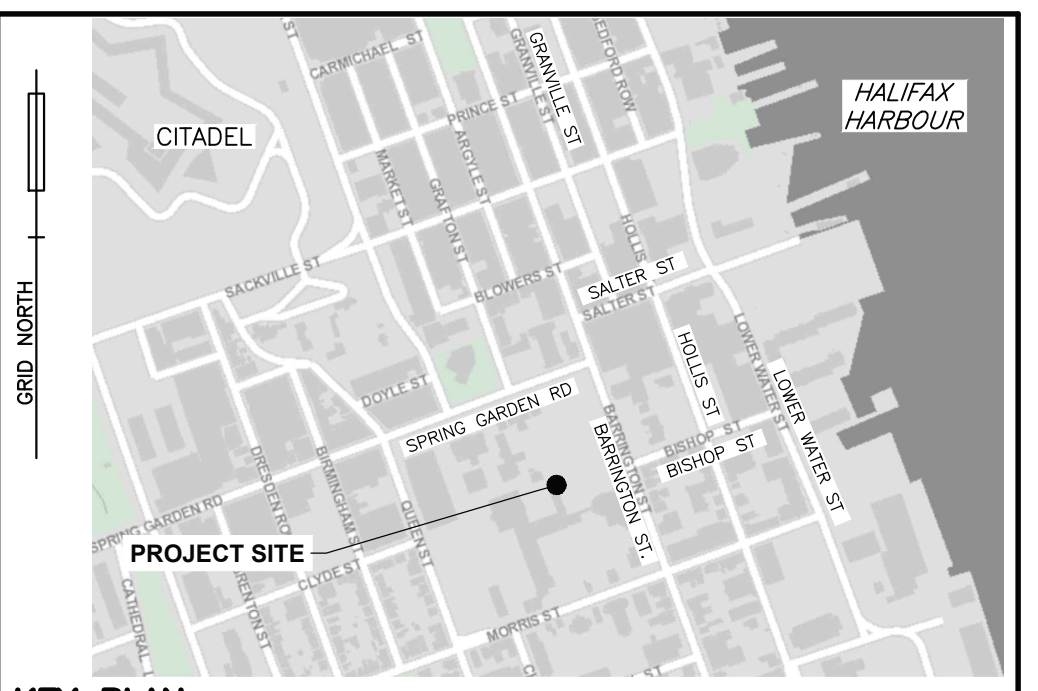


PAVEMENT MARKINGS				
IDENTIFICATION	TYPE	WIDTH	COLOR	QUANTITY
①	STOP BAR	450 mm	WHITE	N/A
②	CROSSWALK LINE	200 mm x 2	WHITE	N/A
③	SINGLE CENTRELINE	100 mm NOT TO BE PAINTED THROUGH INTERSECTIONS	YELLOW	15 m
④	DOUBLE CENTRELINE	100 mm x 2 NOT TO BE PAINTED THROUGH INTERSECTIONS	YELLOW	N/A
⑤	SOLID C WITH BROKEN 3x6 LINE	100 mm	YELLOW	N/A
⑥	LANE & BIKE LINES	100 mm	WHITE	N/A
⑦	BROKEN LINE 3x3	100 mm	WHITE	N/A
⑧	BROKEN LINE 3x6	100 mm	WHITE	N/A
⑨	BIKE LANE DASHED LINE 1.5x1.5	100 mm	WHITE	N/A
⑩	HATCH	100 mm LANE LINES WITH 600 mm HATCH LINES, 6.0 m SPACING	YELLOW	N/A
⑪	HATCH	100 mm LANE LINES WITH 600 mm HATCH LINES, 6.0 m SPACING	WHITE	N/A
⑫	ARROW	3/4 TAC SIZE	WHITE	N/A
⑬	RESERVED LANE SYMBOL	3/4 TAC SIZE	WHITE	N/A
⑭	BIKE SYMBOL		WHITE	N/A
⑮	SHARED USE LANE SYMBOL		WHITE	N/A
⑯	ZERBA CROSSWALK	600 mm	WHITE	N/A



LEGEND		
EXISTING		PROPOSED
25.0	CONTOUR LINE	25.0
⊗/⊗BF	CURB STOP/GATE/BUTTERFLY VALVE	⊗/⊗BF
⊕	FIRE HYDRANT	⊕
⊕	CONCRETE THRUST BLOCK	⊕
⊕	SIAMESE CONNECTION	⊕
⊕	CATCH BASIN/PIT	⊕
⊕	CULVERT	⊕
⊕	ROCK LINING/DAM	⊕
⊕	ROCK WALL/RETAINING WALL	⊕
⊕	POWER POLE & ANCHOR/LIGHT STANDARD	⊕
⊕	TREE	⊕
⊕	STREET SIGN/PARKING METER	⊕
× 131.82	ELEVATION/GRADE	[125.00] × / + 125.00
⊕	TEST PIT	⊕
→	DRAINAGE/SWALE FLOW DIRECTION	→
W	WATER MAIN/SERVICE	W
SAN	SANITARY MANHOLE & PIPE	SAN
STM	STORM MANHOLE & PIPE	STM
SAN/STM	COMBINED MANHOLE & PIPE	SAN/STM
GAS	GAS LINE	GAS
FL	100YR. FLOOD LIMIT	FL
—	GUARD RAIL	—
—	UNDERGROUND CONDUIT	—
—	OVERHEAD WIRES	—
—	PROPERTY LINE/BOUNDARY	—
—	FENCE	—
—	BUILDING	—
—	TOP OF SLOPE	—
—	TDE OF SLOPE	—
—	TREELINE	—
—	LIMITS OF DISTURBANCE	—
—	TACTILE PEDESTRIAN PLATES	—
—	PROJECT SAFETY SIGNAGE	—
—	ORANGE SAWHORSE BARRICADE	—

NOTES
 1. THIS PLAN IS IN METRIC.

REVIEWED AND APPROVED FOR TRAFFIC SIGNALS AND PAVEMENT MARKINGS
 Appr'd _____ Date _____
 for TRAFFIC AUTHORITY

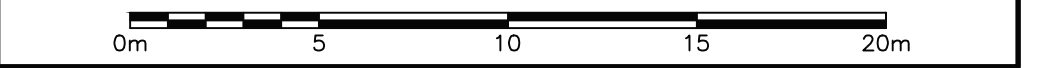
No.	YY/MM/DD	Revision	Description	Appr'd
0	19/06/03		ISSUED FOR REVIEW	



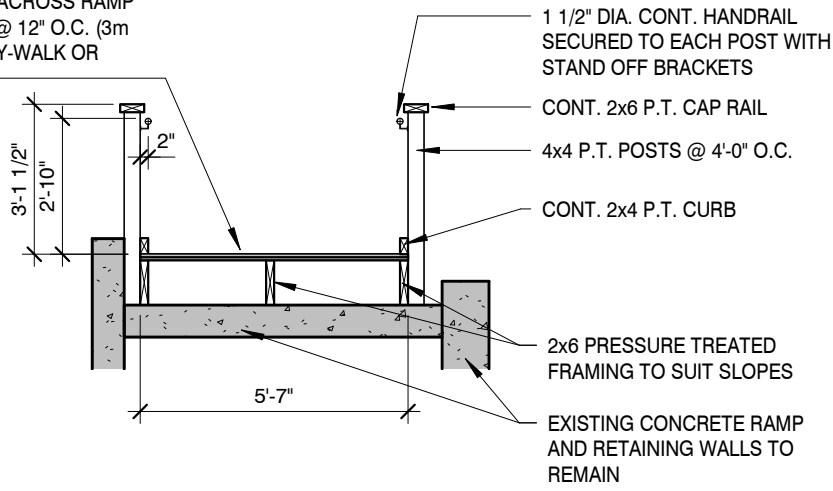
MARITIME CENTRE RENOVATIONS
 1505 BARRINGTON STREET
 HALIFAX, NOVA SCOTIA

PHASE 2 LINE PAINTING PLAN
 BARRINGTON STREET

Date	June 3, 2019	Drawn	C. PORTER	Project No.	FILE NO. 1-1-136 (33602)
Scale	1:200	Engineer	G. MACLEAN	Plan No.	16-1993-0
Reference	--	Approved	G. MACLEAN	Drawing Name	R4
Surveyed	SDMM	Sheet			

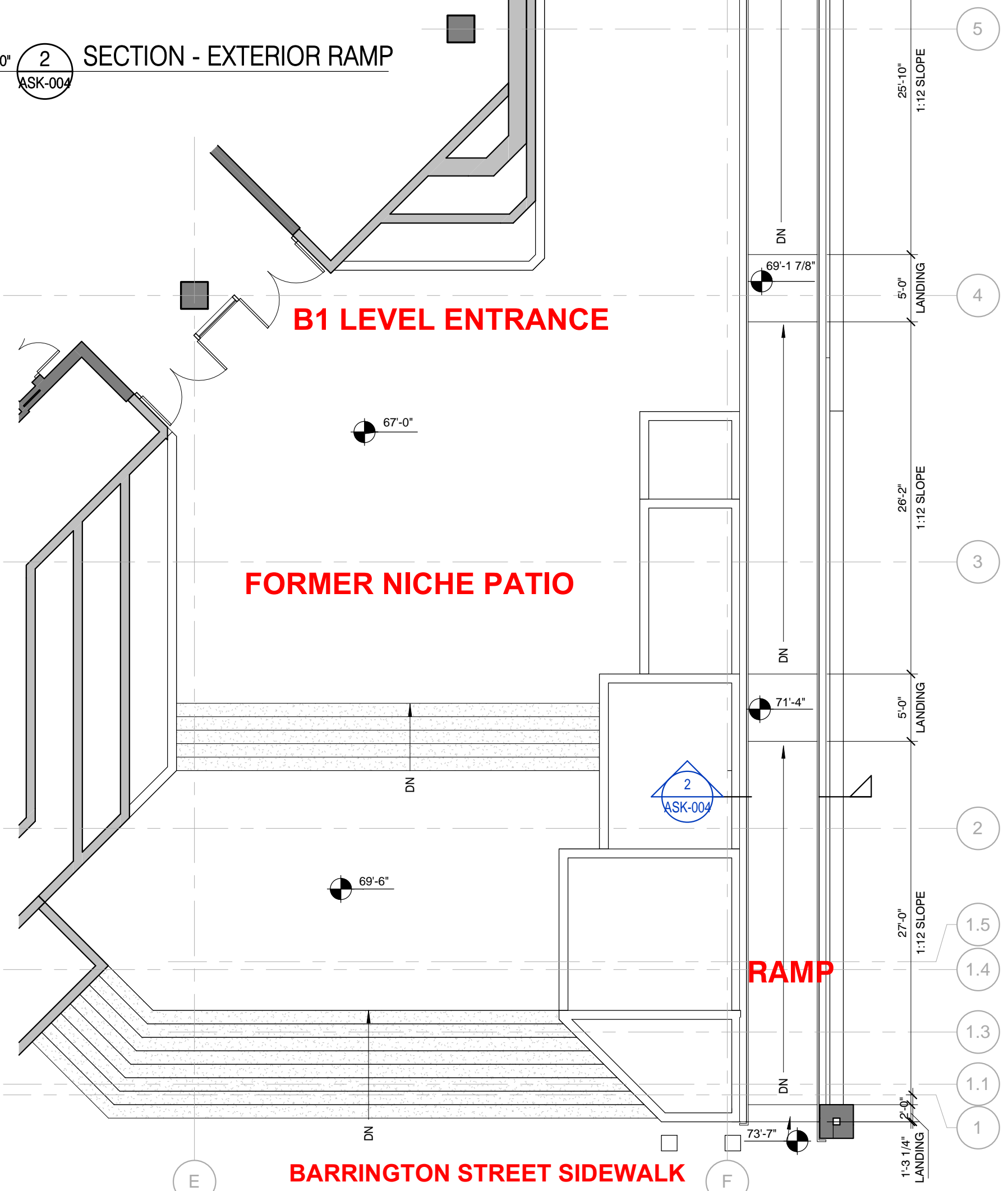


2 LAYERS 3/4" P.T. PLYWOOD. INSTALL STRIPS OF 6" WIDE SAFETY MATERIAL ACROSS RAMP SURFACE @ 12" O.C. (3m 610 SAFETY-WALK OR SIMILAR)



ALLOW FOR 12" EXTENSION AND RETURN OF HANDRAILS AT ENDS OF POSTS, TYPICAL

1/4" = 1'-0" **2 SECTION - EXTERIOR RAMP**
ASK-004



1/8" = 1'-0" **1 67'-0" P3-B1 EXTERIOR RAMP**
ASK-004

ARCHITECTURE 49

1640 Market Street, Halifax, Nova Scotia, Canada, B3J 2C8
T: 902.429.5490 F: 902.429.2632 www.architecture49.com

Title: **TEMPORARY EXTERIOR WOOD B.F. RAMP DETAIL**

Project: **Maritime Centre Redevelopment**

Drawn: LD	Checked: DP	Approved: CM
Date: 11/15/19	Scale: As indicated	

DWG NO.: **ASK-004**